

Text Evidence Task 1

1. Analyze the fresco by Italian Renaissance artist, Raphael.

Make a list explaining what evidence from the painting can be used to make inferences about the society (community) pictured.

©Fallon Howes (Howes in the Middle)

Theme Task 2

2. After analyzing the details in Goya's painting, what could be a fitting theme for the painting?

Make sure you can explain the theme chosen by using details from the painting.

Point of View Task 3

3. The *Woman with a Hat* is known to be a painting of Matisse's wife.

If you were to write a short story based off this picture, what point of view would you use? (first person, second person, or third person) Why?

Inference Task 4

4. A- What can you infer about the artist Magritte based off of his painting?

B- What can you infer about the couple shown in the painting? Use details from the painting to explain your answer.

Theme Task 2



Artist: Francisco de Goya
Title: The Third of May
Dated: 1814
Medium: oil on canvas

©Fallon Howes (Howes in the Middle)

Text Evidence Task 1



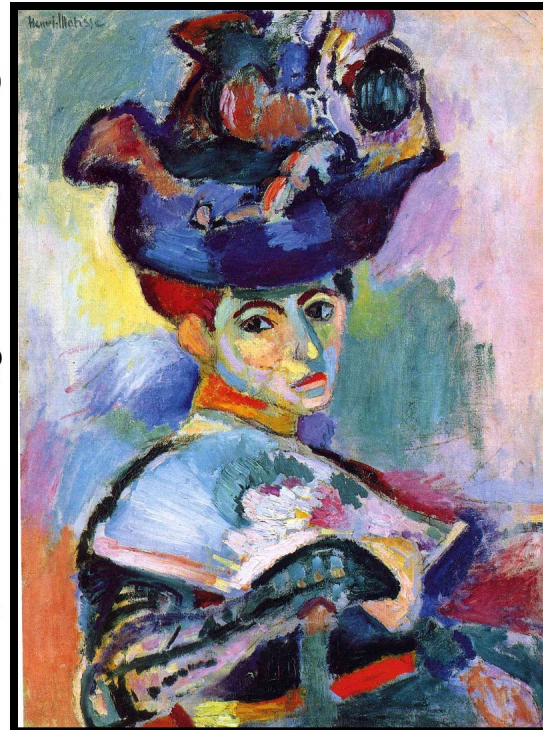
Artist: Raphael
Title: The School of Athens
Dated: 1509- 1511
Type: Fresco

Inference Task 4



Artist: Rene Magritte
Title: The Lovers
Dated: 1928
Medium: oil paint

Point of View Task 3



Artist: Henri Matisse
Title: Woman with a Hat
Dated: 1905
Medium: oil on canvas

Figurative Language Task 5

5. After taking in the many details in *The Tree of Life*, write an appropriate metaphor, simile, or analogy to explain your thoughts and/or your reaction to the piece.

©Fallon Howes (Howes in the Middle)

Text Evidence Task 6

6. Pay close attention to the body language in Max Ernst's painting.

What evidence from the painting could be used to explain that the figures depicted are a father and son?

Theme Task 7

7. After analyzing the details in Seurat's painting, what could be a fitting theme for the painting?

Make sure you can explain the theme chosen by using details from the painting.

Setting Task 8

8. Pay close attention to the figures, symbols, and other details in the painting.

Make a list detailing what you can tell about the setting of this painting.

Text Evidence Task 6



Artist: Max Ernst
Title: Pieta or
Revolution by Night
Dated: 1923
Medium: oil paint

@FallonHowes (Howes in the Middle)

Figurative Lang. Task 5



Artist: Gustav Klimt
Title: The Tree of Life
Dated: 1909
Medium: Multiple Medias

Setting Task 8



Artist: Lin Fengmian
Title: Harvest
Dated: ?
Medium: oil on canvas

Theme Task 7



Artist: Georges Seurat
Title: A Sunday on La Grande Jatte
Dated: 1884- 1886
Medium: oil on canvas

Inference Task 9

9. A- Based on the painting *The Jolly Flatboatman*, what can you infer about the setting?

B- What can you infer about the people in the painting?

©Fallon Howes (Howes in the Middle)

Conflict Task 10

10. After analyzing *The Scream*, think about the emotions portrayed by the figure.

What type of conflict does he/she seem to be experiencing? Explain using evidence from the image.

Text Evidence Task 11

11. Pay close attention to the woman's facial expression.

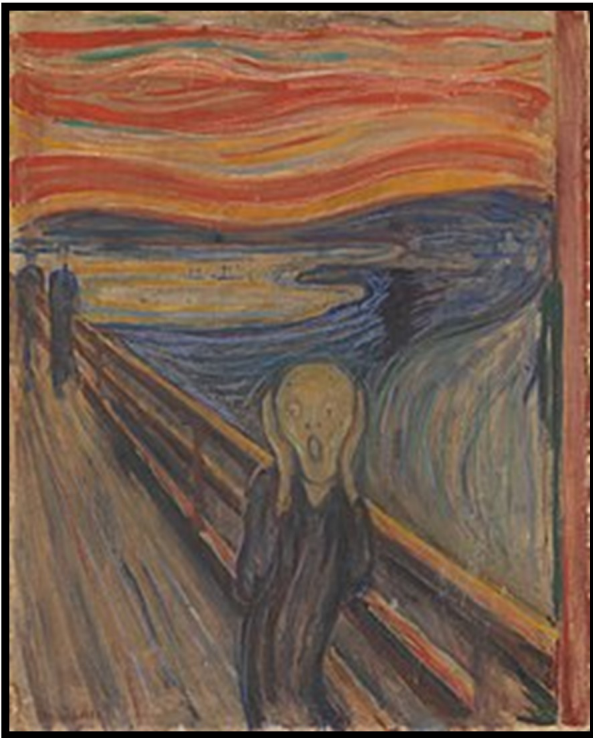
What can you infer about her? Use evidence from the picture to support your response.

Setting Task 12

12. Pay close attention to the figures, symbols, and other details in the painting.

Make a list detailing what you can tell about the setting of this painting.

Conflict Task 10



Artist: Edvard Munch
Title: The Scream
Dated: 1893
Medium: oil, tempera, pastel and crayon on cardboard.

©Fallon Howes (Howes in the Middle)

Inference Task 9



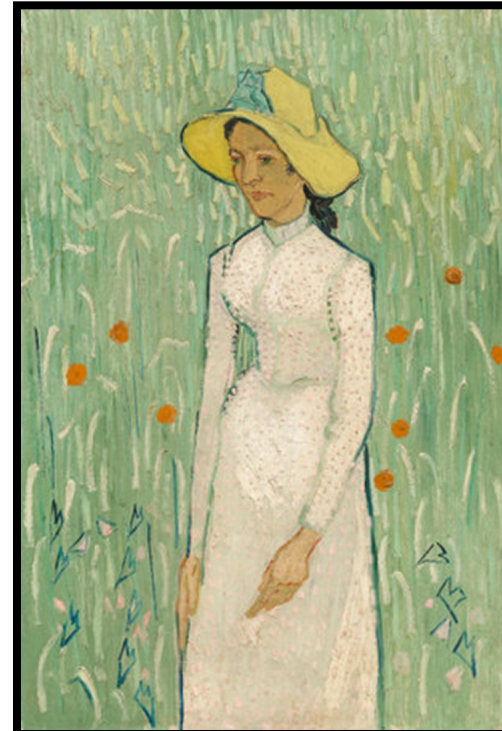
Artist: George Caleb Bingham
Title: The Jolly Flatboatman
Dated: 1846
Medium: oil on canvas

Setting Task 12



Artist: Claude Monet
Title: Japanese Footbridge
Dated: 1899
Medium: oil on canvas

Text Evidence Task 11



Artist: Vincent van Gogh
Title: Girl in White
Dated: 1890
Medium: oil on canvas

Figurative Language Task 13

13. After taking in the many details in *The Flower Carrier*, write an appropriate metaphor, simile, or analogy to explain your thoughts and/or your reaction to the piece.

©Fallon Howes (Howes in the Middle)

Text Evidence Task 14

14. Pay close attention to the details in the Mona Lisa's face and the background of the painting.

What can you infer about her based on her expression and surroundings?

Theme Task 15

15. After analyzing the details in the painting of the couple, what could be a fitting theme for the painting?

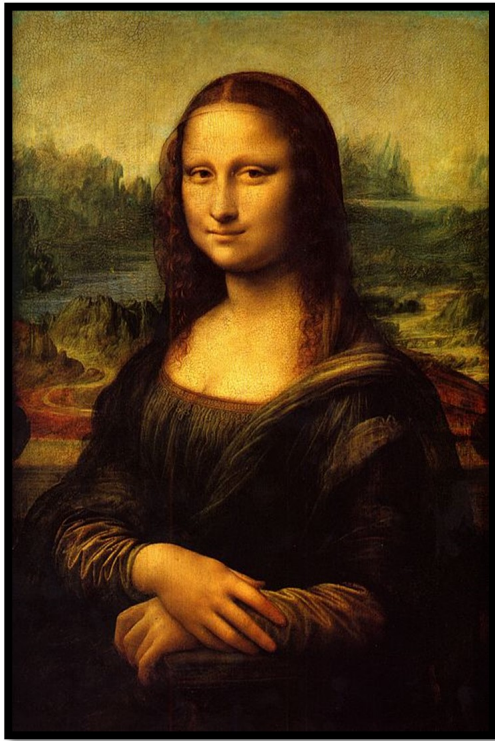
Make sure you can explain the theme chosen by using details from the painting.

Setting Task 16

16. Pay close attention to the figures, symbols, and other details in the painting.

Make a list detailing what you can tell about the setting of this painting.

Text Evidence Task 14



Artist: Leonardo da Vinci
Title: The Mona Lisa
Dated: 1503-1506
Medium: oil on a poplar panel.

©Fallon Howes (Howes in the Middle)

Figurative Lang. Task 13



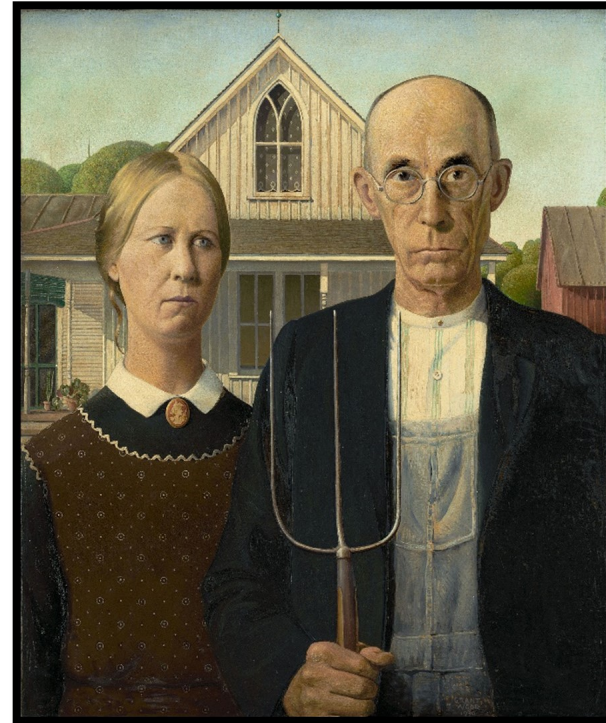
Artist: Diego Rivera
Title: The Flower Carrier
Dated: 1935
Medium: Masonite, Tempera, Oil paint

Setting Task 16



Artist: Claude Monet
Title: Impression, Sunrise
Dated: 1872
Medium: oil on canvas

Theme Task 15



Artist: Grant Wood
Title: American Gothic
Dated: 1930
Medium: oil on beaverboard